

CLARENCE VALLEY COAST AND ESTUARY MANAGEMENT COMMITTEE

DRAFT MINUTES

Monday 25th March 2024 at the Maclean Chambers, 50 River Street Maclean.

ITEM 1 INTRODUCTION: WELCOME AND APOLOGIES

Meeting opened at 9:05am with Cr Clancy in the chair. Attendees introduced themselves. Cr Clancy acknowledged the traditional owners:

We acknowledge the Traditional Custodians of these lands on which this event is taking place and pay tribute and respect to the Elders past, present and emerging of the Bundjalung, Gumbaynggirr and Yaegl nations which lie within the Council boundary.

Attendance:

Voting: Cr Greg Clancy (Chair) (GC), Cr Jeff Smith (on-line) (JS), Kevin Sheehan (Community) (KS), Peter Maslen (Community) (PM), Imelda Jennings (Community) (IJ), Roslyn Woodward (Valley Watch) (RW), Victoria Honey (Cane Growers – Alternate for Peter Rose) (VH)

Observers: Cr Steve Pickering (on-line) (SP)

Agencies: Zoe Immisch (DCCEEW) (ZI), James McLeod (SIMP – on-line) (JM), Mark Fletcher (NPWS) (MF), Jonathan Yantsch (DPI – Fisheries) (JY), Joel Version (NPWS – on-line) (JV), Tina Clements (Crown Lands – on-line) (TC)

CVC Officers: Greg Mashiah (GM), Uriah Makings (UM), Murray Lane (ML) (arrived 09:35)

Presenters: Robyn Campbell (Hydrosphere) (RC), Ross Farlow (Canegrowers) (left 09:30) (RF)

Apologies received from:

Name	Committee Role	Organisation/Role
Peter Rose	Appointed Member	Cane Growers – Victoria Honey alternate
Danielle Adams	Appointed Member	CRFC
Leanne Ball	Appointed Member	Polaris Marine Harwood
Pat Dwyer	DPI Fisheries	
Scott Lenton	CVC Officer	Manager Environment & Regulatory Services

Quorum: 5

Total Members at todays CV C&EMC: 7 Quorum reached – Yes / ~~No~~

ITEM 2 DECLARATIONS OF INTEREST

- Nil

ITEM 3 CONFIRMATION OF PREVIOUS MINUTES

MOTION: That the minutes of the Clarence Valley Coast and Estuary Management Committee meeting of 11 November 2023 be confirmed.
Moved: Peter Maslen Seconded: Imelda Jennings (Consensus)

ITEM 4 BUSINESS ARISING FROM THE MINUTES

- Nil

Ross Farlow made a presentation to the Committee on Item 7.

- GC – Is the motion coming to Council calling on Government to cease the consultation on the MEMS report realistic and feasible? *RF – the MEMS “community engagement” program has involved meetings with stakeholders at the beginning and the end with no general community engagement before a survey was publicly released, so hopeful this inadequate consultation will be recognised.*
- IJ – what is being requested of the C&EC? *RF – After speaking at the Floodplain Committee last week, Deanna Fernance spoke with Ros Woodward and Ros requested that Ross make a presentation to this committee outlining his concerns that the MEMS report will not achieve its stated outcomes. It is up to the C&EMC how it responds to the MEMS report.*

(Ross Farlow left the meeting at 09:30)

ITEM 5

OPEN COAST CMP – STAGE 3

See attached PowerPoint presentation from Robyn Campbell (Hydrosphere).

Questions:

- GC – Yaegl issue with Hickey Island and planned retreat as Yaegl proposal has been supported with State Government funding. *ZI – funding under the state program is 2:1 but where there are private beneficiaries the funding ratio is 60% private and 40% state/local government.*
- GC – will developers be potentially sourcing sand for fill impact on sand availability for Whiting Beach? *RC – the proposed sand source for Hickey Island is TfNSW dredging for navigation purposes; developers are considering other commercial sand sources.*
- IJ – last time sand nourishment was undertaken at Whiting Beach it closed the beach accesses for some time. *RC – current requirements are that beach access be maintained.*
- GC – Lake Cakora – how have ecological impacts of management (e.g. dog free area at mouth of lake is off leash area) been considered? *RC: Has been considered in Stage 3 report but a specific action is yet to be identified*

Meeting adjourned at 10:36 and recommenced at 10:51.

- RW – migration of vegetation communities was assessed at low priority. Will this impact on funding to address future coastal inundation? *RC: Risks consider timeframe and risk with vegetation communities will increase over time with sea level rise. JY: Fisheries have a program developing strategies identifying areas at high risk and actions which can be taken to address long term migration; Lake Cakora is not currently included but it has been requested to be added to the program. ZI – the CMP has to consider a 100 year planning period although it is reviewed every 10 years.*
- IJ – why is beachwatch not being undertaken (with Water Quality monitoring at Angourie pools)? Concerns that Blue Pool is being marketed as part of tourism but may not meet recreational water quality requirements. *RC: recreational water quality monitoring has been included as a recommendation in the CMP; not yet resolved as to how this would be actioned. JY: Believes Water NSW undertakes fortnightly monitoring which includes Blue Pools.*

MOTION: **The Coast & Estuary Management Committee recommends that Council:**

- 1. Notes the Open Coast Coastal Management Program Stage 3 Report,**
- 2. Makes the Open Coast Coastal Management Program Stage 3 Report publicly available on Council’s website and the Clarence Conversations project pages,**

3. Publicly exhibit the Open Coast Coastal Management Program Stage 3 Report for three weeks,
4. Proceed with the Open Coast Coastal Management Program Stage 4.
Moved: Peter Maslen Seconded: Imelda Jenning CONSENSUS

ITEM 6

ESTUARY CMP – STAGES 2-4 (Uriah Makings)

Uriah Makings updated the committee on progress with stages 2 to 4. Stage 2 is expected to take about 18 months:

- A grant offer has been received to undertake Stages 2 to 4. A consultant brief is currently being prepared.
- Tidal inundation assessment will use the recently updated flood model.
- Two items which will be undertaken separately to the consultant engagement are:
 - Riparian condition assessment and prioritisation will be managed by NSW Fisheries. *IJ – there is funding for flying fox habitat restoration and riparian zones were identified as a possible location.*
 - Catchment wide nutrient and sediment model (point and diffuse source) – by Council and stage agencies.

ITEM 7

NORTHERN RIVERS DRAINAGE REPORT (CULLETON REPORT), COASTAL FLOODPLAIN DRAINAGE MANAGEMENT PROJECT AND DRAINAGE RESET PROGRAM

Jonathon Yantsch spoke on the MEMS Coastal Floodplain Drainage Management Project. It is one of a suite of MEMS projects addressing priority threats and risks (diffuse source water pollution) and legislative complexity. It was never an intention for this project to address ownership and funding issues. Specific details of the proposed options arising from the Coastal Floodplain Drainage Management Project have not yet been finalised; however options are intended to address the objectives, for example, the intention of *Option 4: Risk based approach* is to potentially streamline the approval process for low risk drainage works with an increasing level of detail and assessment required for higher risk drainage works to mitigate/avoid downstream water quality impacts. Wholesale approval exemptions for floodplain drainage works undertaken by a single industry are unlikely to be supported as the same approval process and legislation applies to a broad range of development and activities throughout NSW coast and coastal floodplain areas, and an exemption for one industry maybe seen as unfair by other industries/groups/proponents. DPI Agriculture commissioned the Culleton Northern Rivers Drainage Report, and the report's terms of reference did not include addressing diffuse source water quality issues associated with floodplain drainage. DPI Agriculture were not on the inter-agency working group for the MEMS Coastal Floodplain Drainage Management project although they were directly engaged and participated in several meetings. The Marine Estate Management Strategy includes an entire initiative on improving water quality with a range of projects directly and indirectly addressing diffuse source water pollution including The Clean Coastal Catchments project, the Coastal Wetland Rehabilitation project, the Improving Roads and Tracks project, the Riverbank Vegetation Improvement project, Bank Management Strategy project and Blue Carbon project.

Cr Clancy flagged an intention to move a motion deferring the Council report.

Questions:

- Are any of the studies considering logging? *JY – logging was not identified as a priority threat and risk to marine estate values within the Threat and Risk Assessment, which underpins the Marine Estate Management Strategy, therefore there are no projects within MEMS addressing logging.*

ITEM 8

AGENCY UPDATES

Clarence Valley Council (Uriah Makings)

Uriah Makings updated the Committee on the Woolli Beach Nourishment undertaken in October 2023 and the Brooms Head Coastal Protection Works Modelling which is currently being undertaken.

KS: When will the modelling be completed? *UM – numerical modelling is in draft; physical modelling may take up to 6 months*

NPWS (Mark Fletcher)

- Mark's report is included as an attachment
- Everlasting Swamp – NPWS is investigating removal of the Sportsmans Creek Weir. This will require hydraulic/hydrologic modelling environmental assessment. No planning consent is required.
- IJ – protocol for managing dead whales? *MF: Protocol for managing marine wildlife. Management measures are site specific and options depend on remoteness of location and approvals which are required. The Marine Wildlife Management Manual is available at <https://www.environment.nsw.gov.au/research-and-publications/publications-search/marine-wildlife-management-manual-2021> and the whale carcass disposal flow chart and checklist used by land managers is at <https://www.environment.nsw.gov.au/research-and-publications/publications-search/marine-wildlife-management-manual-2021>*

DCCEEW – Biodiversity Conservation Division (Zoe Immisch)

- No additional information beyond presentations

Fisheries (Jonathon Yantz)

- No additional information beyond presentations
- GC: Impact of mangrove growth on sites which are used by shorebirds and interaction with NPWS? *JY – no active management of saltmarsh and mangroves; natural processes are allowed to take their course.*
- GM: White spot disease impacts? *Some prawn trawling licences have been bought out; further information is at <https://www.dpi.nsw.gov.au/dpi/bfs/aquatic-biosecurity/aquaculture/prawns/white-spot>*

Solitary Island Marine Park

- No progress on Draft Management Plan
- Issues with Personal Water Craft during summer holidays at Woolli; may be an issue during Easter
- Proposing to upgrade signage.

Crown Lands

- Coastal Crown Land Guidelines – provide community with information on applications for work within coastal zone (hyperlink to be added in minutes)
- Inclusion of items in a CMP does not indicate automatic approval – statutory importance is considered when giving landowners consent. There is a backlog of licence approvals. No current ILUA with Yaegl TOAC – Department is aware that this may impact on coastal protection and hazard mitigation projects.

ITEM 9

GENERAL BUSINESS

- IJ – use of jet skis and increased popularity of spear fishing (and interaction with swimmers), particularly at Angourie? *JY – not allowed to*

spear fish within 20m of a headland

ITEM 8

NEXT MEETING

- *Provisionally 24 June (subject to completion of Stage 4 report)*

ITEM 9

CLOSE OF MEETING

Meeting closed at 12:13

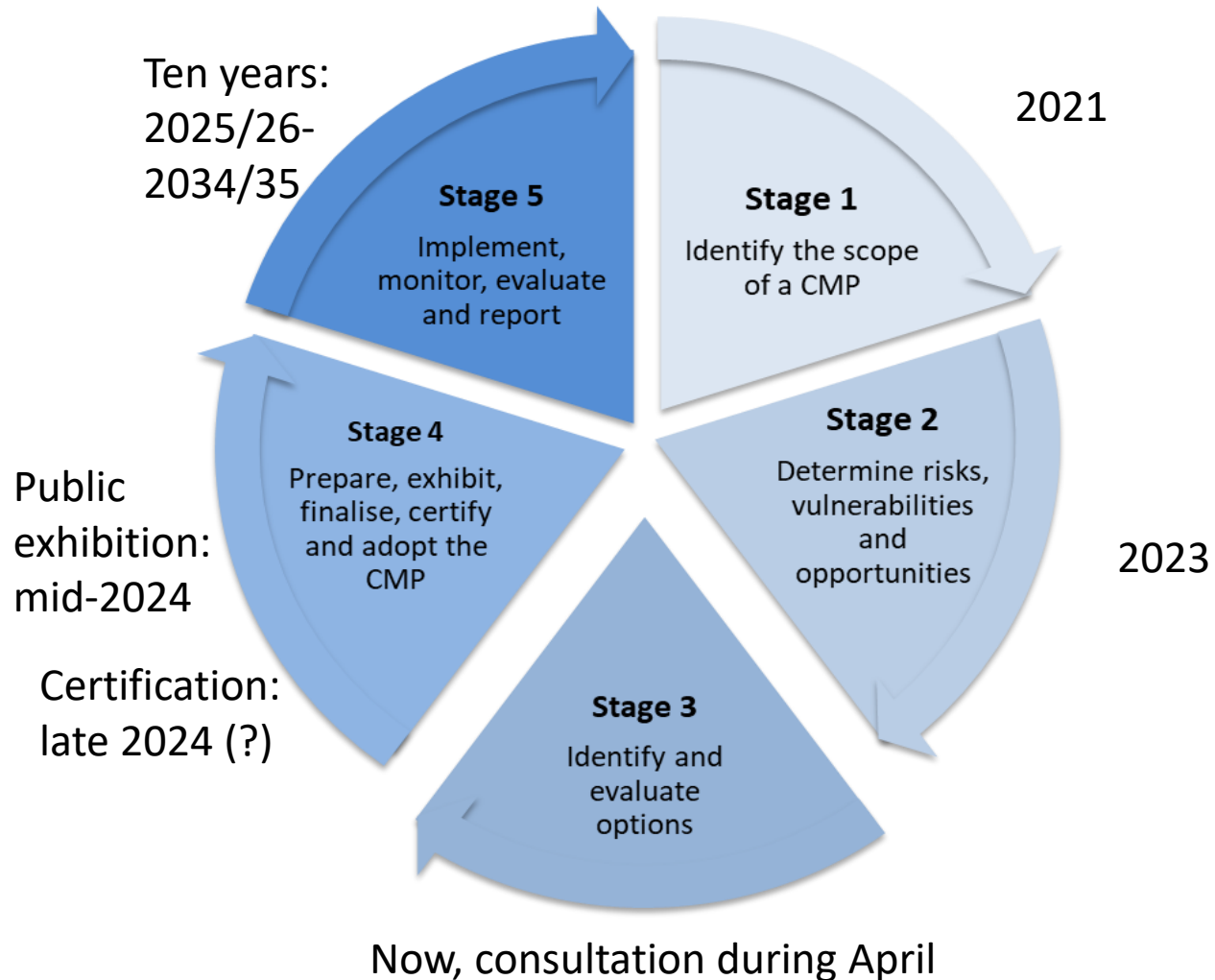
Clarence Valley Coastline and Estuaries CMP Stage 3



Presentation Outline

1. Recap – CMP stages, Stage 3 scope: Robyn Campbell, Hydrosphere Consulting
2. Stage 4 introduction – proposed development of CMP actions: Robyn Campbell
3. Stage 3 recommendations: Robyn Campbell
4. Discussion – Stage 3 outcomes: All
5. Committee recommendations: All

CMP Stages



Stage 3:

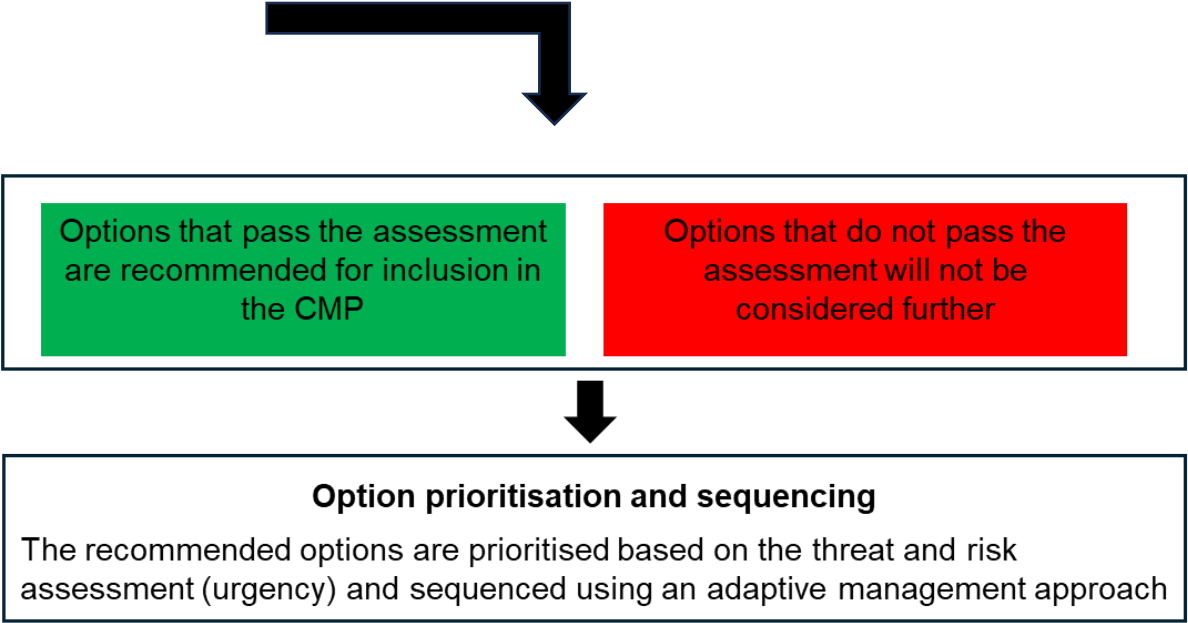
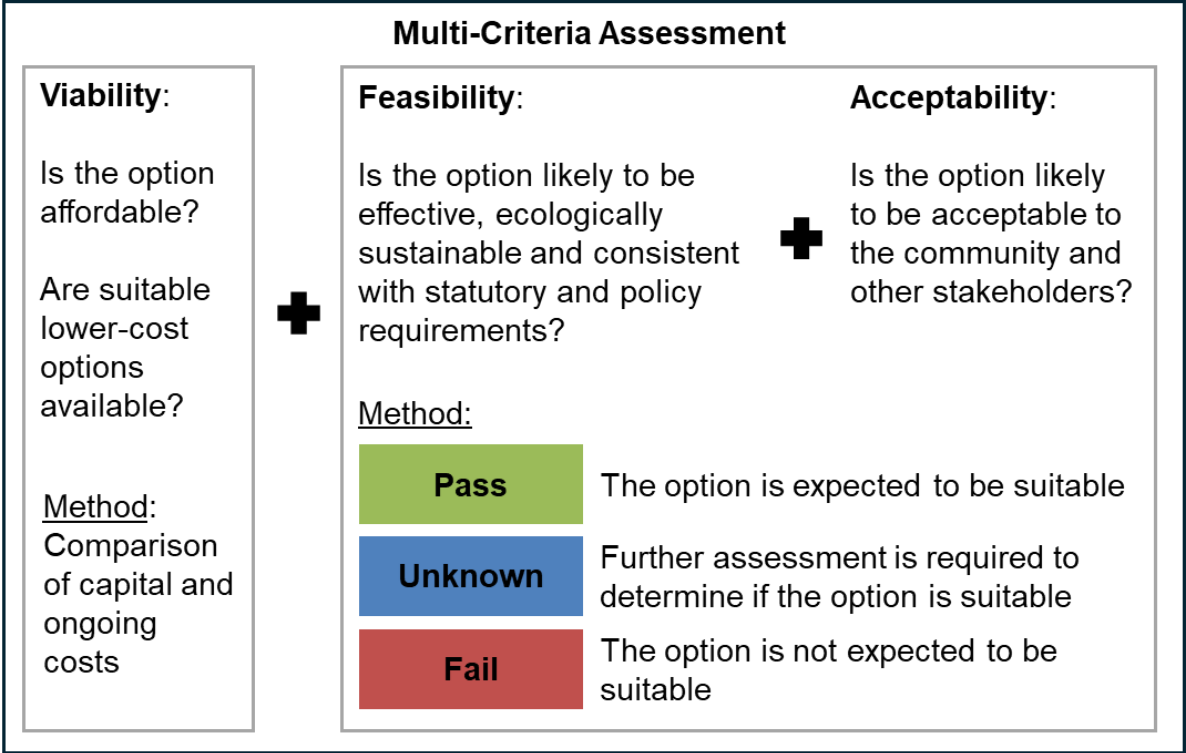
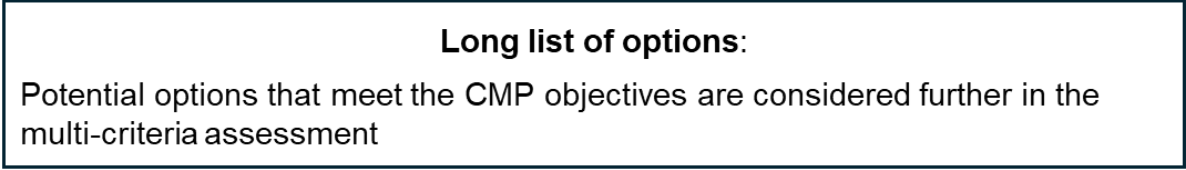
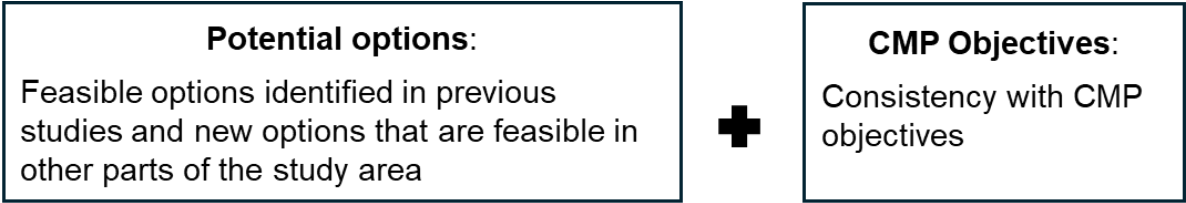
- Management options
- Multi-criteria assessment
- Recommended options
- Next - agency and community stakeholder engagement

Stage 3 Methodology

- Strategic approaches
- Study area (SA) options, fundamental to successful implementation, support other management approaches
- Local management options for each management zone (Y, BH, W etc.)
- Clarence River Estuary CMP (CRE) options
- Draft Implementation plan



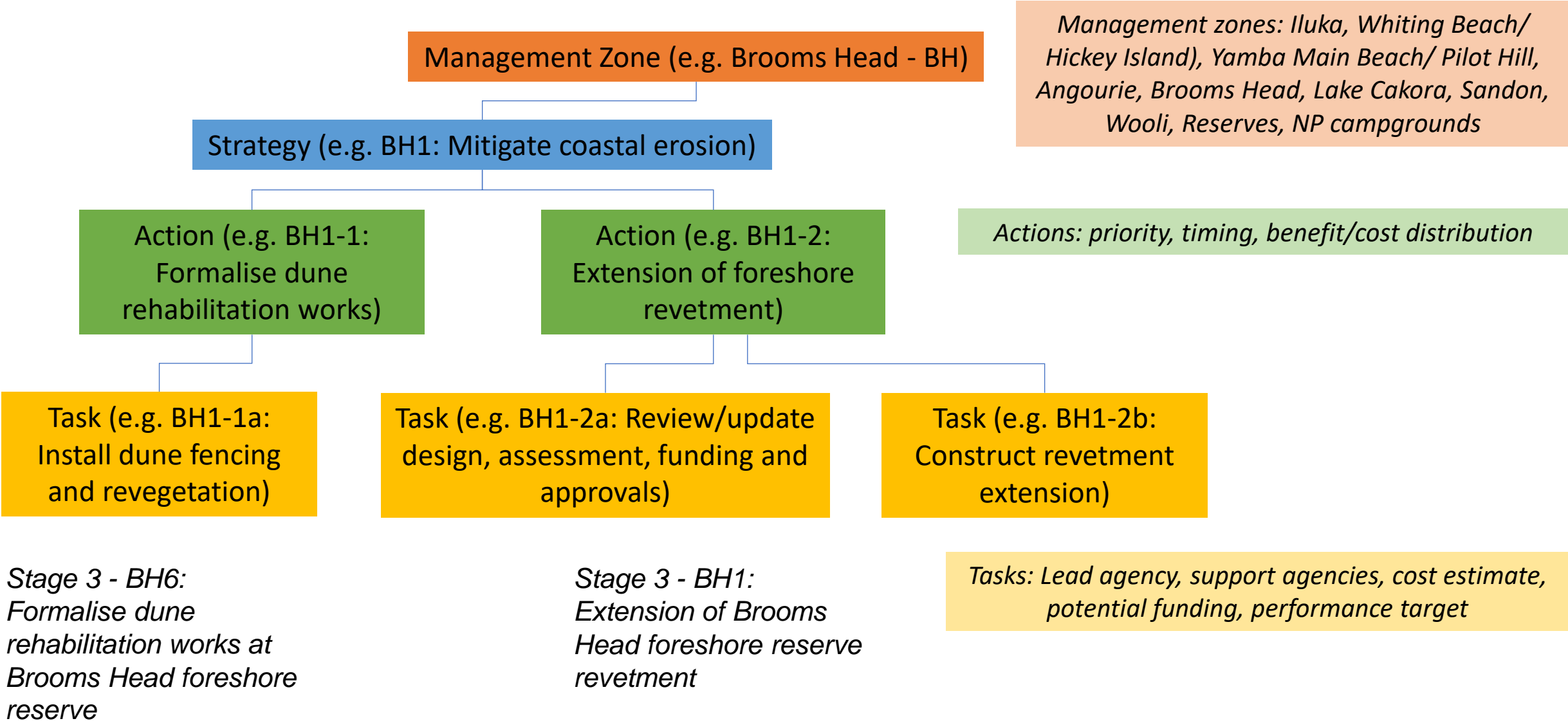
Options Assessment



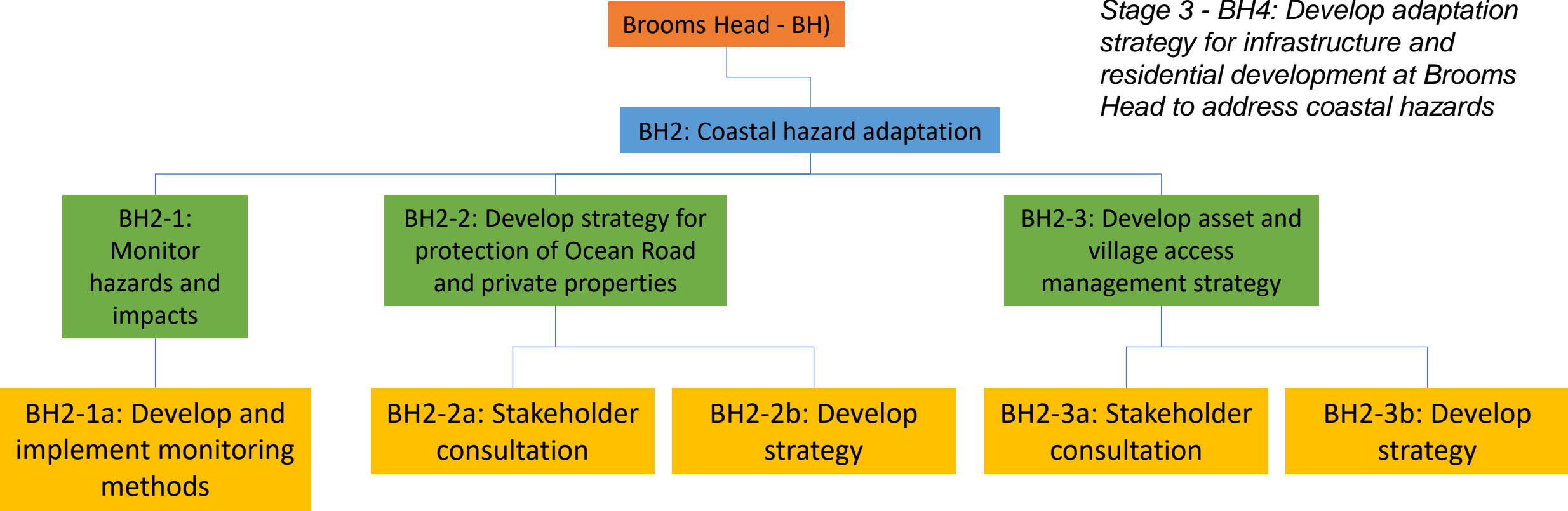
Next steps - Stage 4

- Confirm options to be included in CMP (following consultation)
- Develop CMP strategies/ actions (incl. tasks, budgets, responsibilities etc.)
- Agency, Yaegl, CEMC consultation
- CMP documentation
- CMP public exhibition
- Final draft CMP for certification by Minister
- Council adoption
- ➔ CMP implementation (subject to funding)

Potential CMP management zone strategies, actions and tasks



Potential CMP management zone strategies, actions and tasks



Adaptive management

- Emerging risks
- Longer-term planning for complex, large-scale risks
- Address uncertainty through adaptive management
- Trigger - incident or occurrence that initiates another event/s
- Threshold - a point when irreversible change is likely to occur, risks become unacceptable, or the current management response is no longer effective

Iluka

2025 CMP Stage 5 2034 Not to scale

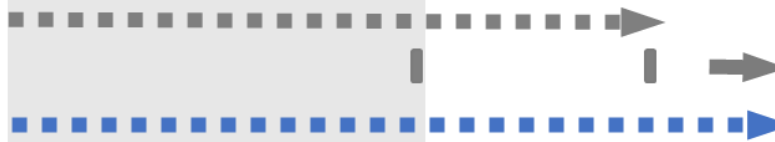
Key threats

- T2 – Shoreline recession
- T43 – Damage to beach access points



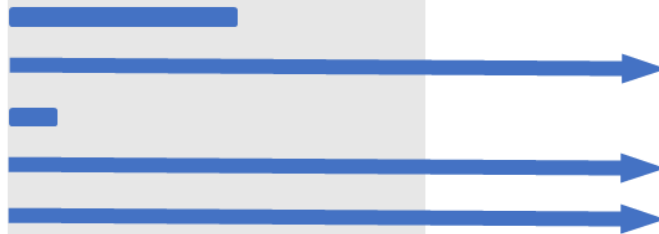
Alert

- SA1: Monitor coastal hazards and impacts
- SA2: Re-assess coastal hazards
- SA6: Weed management



Avoid risk

- SA21: Review and update land use planning and development controls
- SA23: Coastal hazard management education materials
- SA26: Asset management planning
- SA12: Coastal habitat restoration and revegetation works
- SA15, SA16, SA24: Management of cultural heritage



Planning for change

- HIWB9: Develop long-term strategy for infrastructure and access arrangements



Emergency response

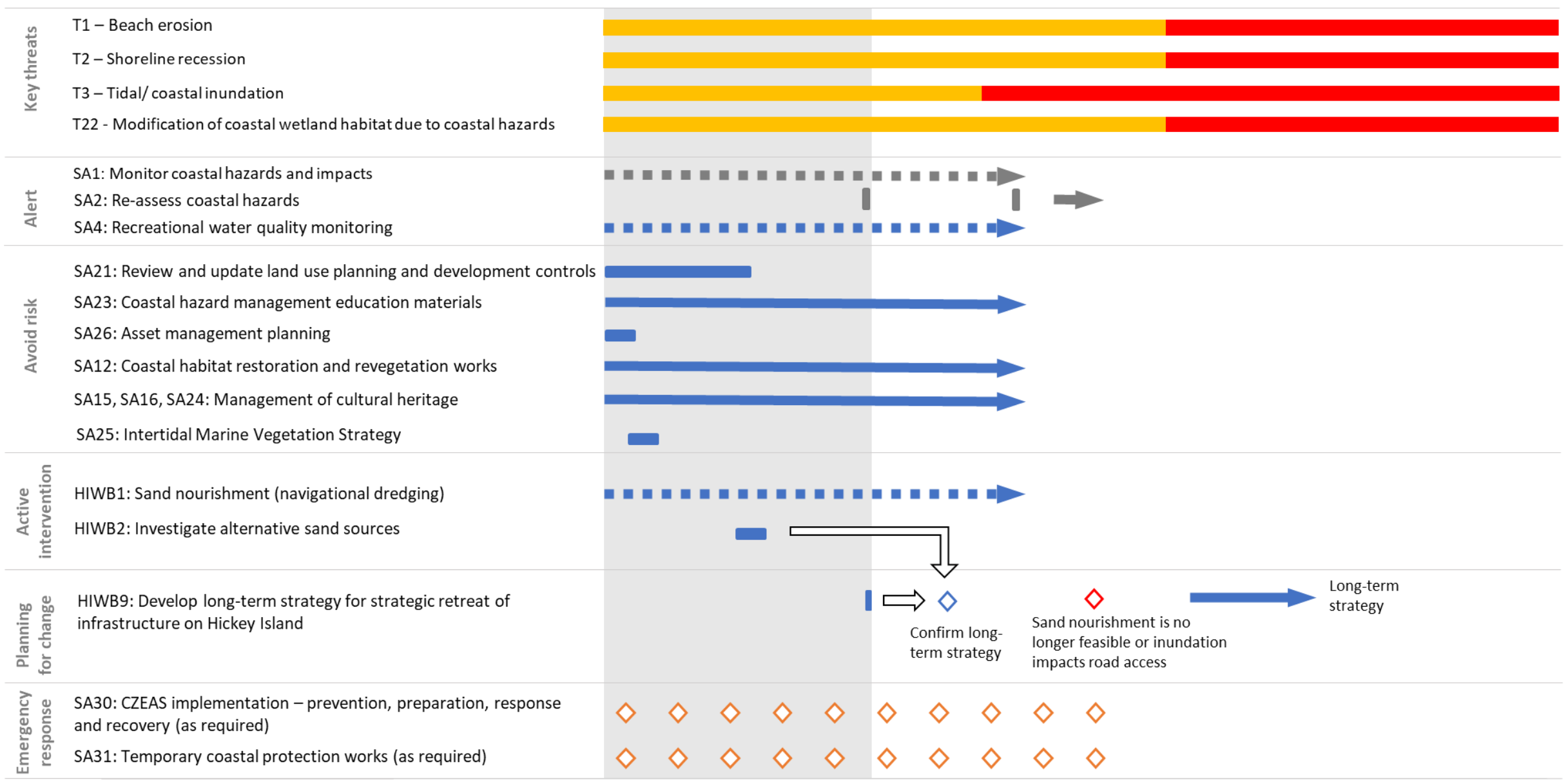
- SA30: CZEAS implementation – prevention, preparation, response and recovery (as required)
- SA31: Temporary coastal protection works (as required)



Risk: High (red bar) Moderate (orange bar) Low (yellow bar) Action (blue bar) Ongoing action (blue arrow) Monitoring, evaluation, reporting (grey bar) Decision pathway (grey arrow) Decision (blue diamond) Threshold (red diamond) Trigger (orange diamond)

Whiting Beach and Hickey Island

2025 CMP Stage 5 2034 Not to scale

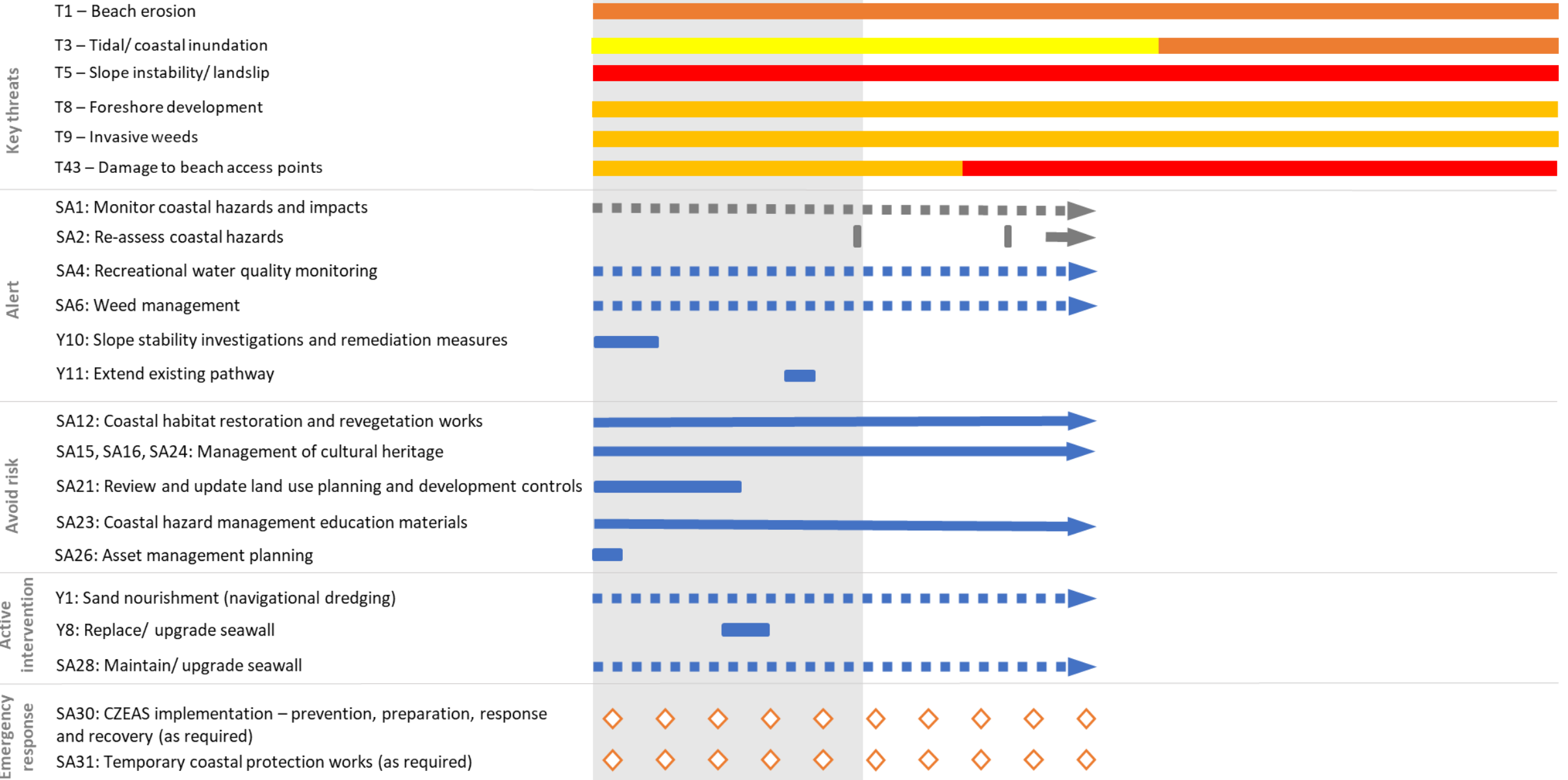


Risk: High (red), Moderate (orange), Low (yellow) |
 Action (blue bar), Ongoing action (blue arrow), Monitoring, evaluation, reporting (grey bar), Decision pathway (white arrow), Decision (blue diamond), Threshold (red diamond), Trigger (orange diamond)

Yamba Main Beach/ Pilot Hill

2025 CMP Stage 5 2034

Not to scale



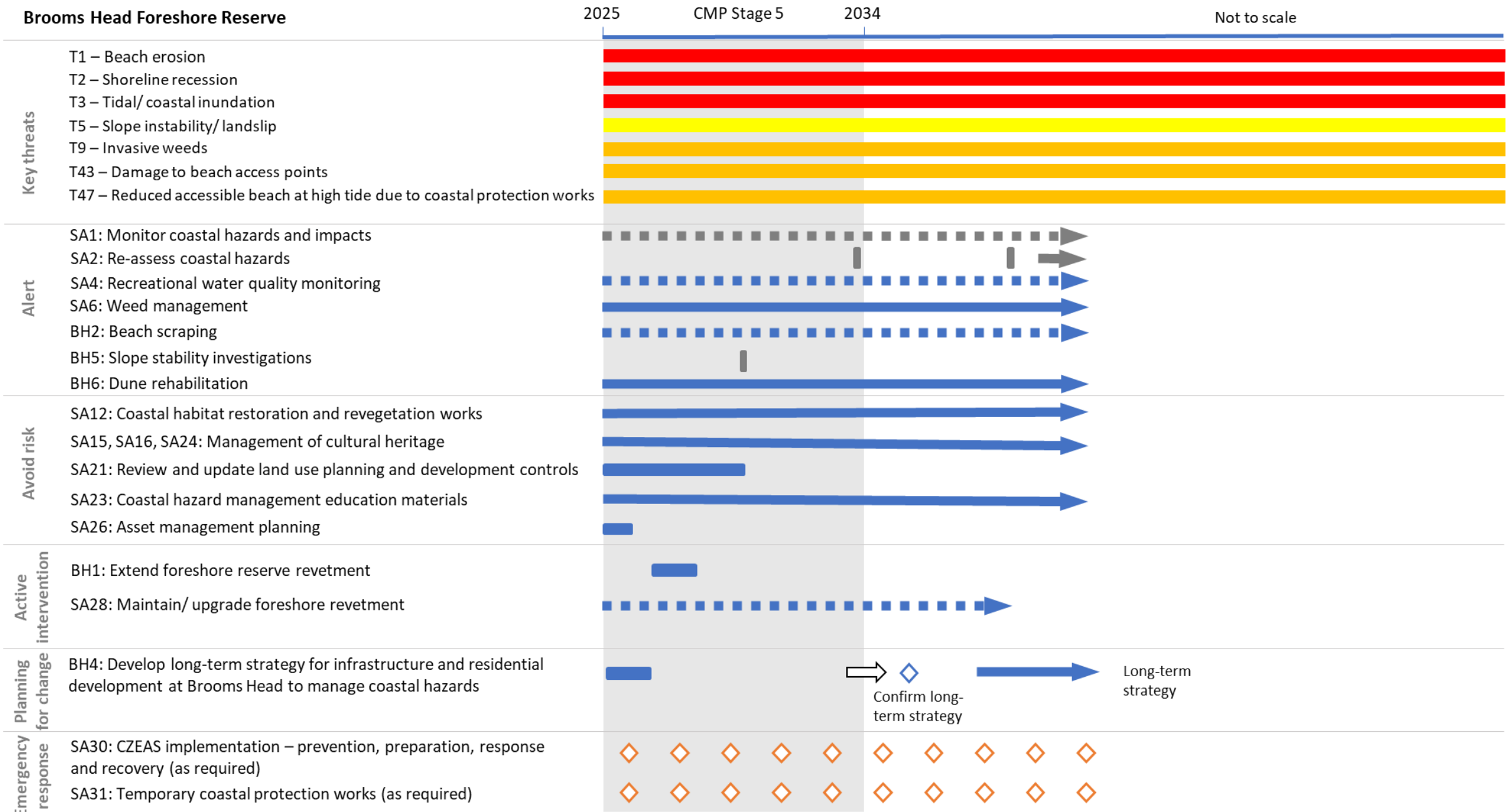
Risk: High Moderate Low Action Ongoing action Monitoring, evaluation, reporting Decision pathway Decision Threshold Trigger

Angourie

2025 CMP Stage 5 2034 Not to scale

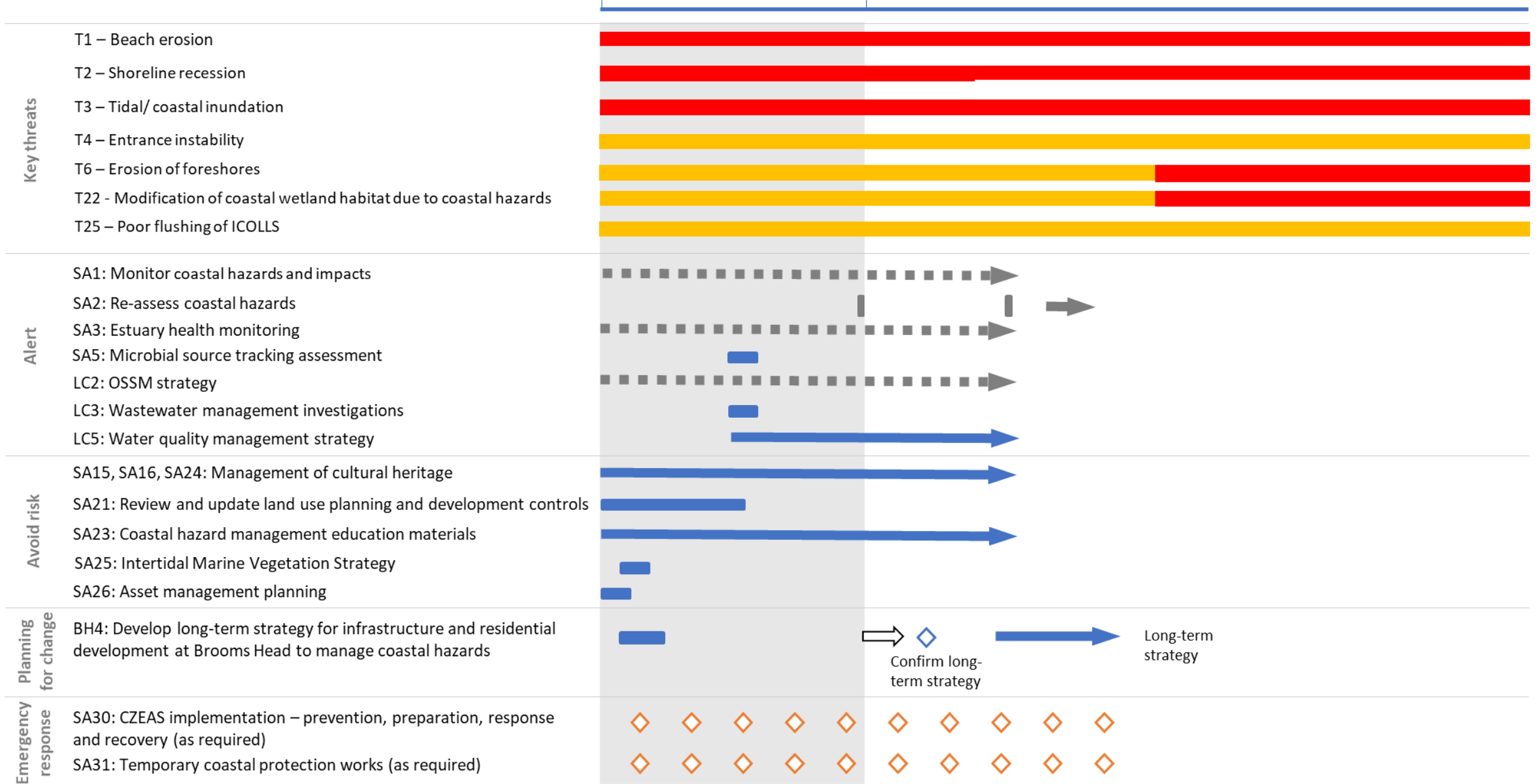


Risk: High Moderate Low Action Ongoing action Monitoring, evaluation, reporting Decision pathway Decision Threshold Trigger



Lake Cakora

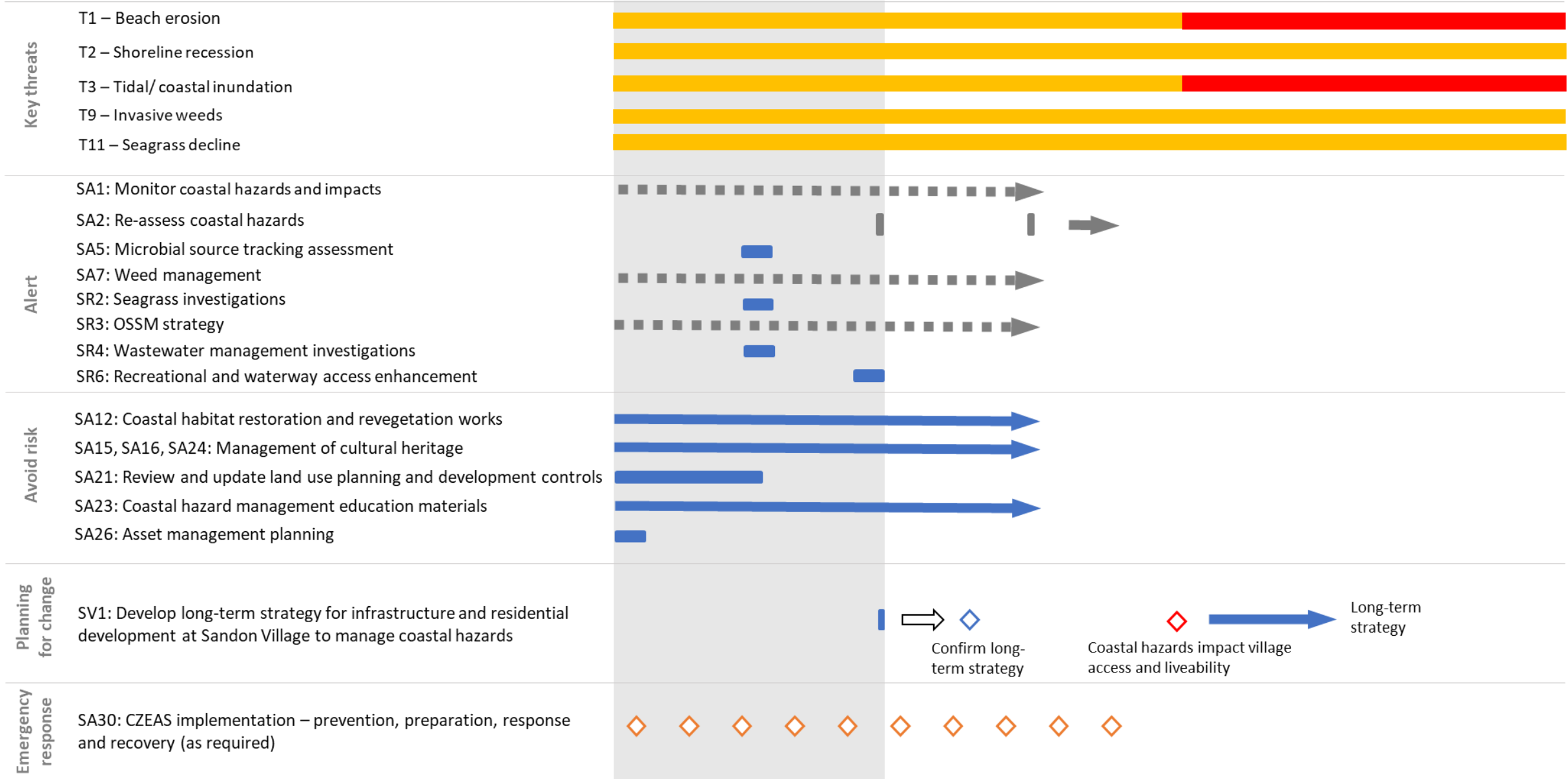
2025 CMP Stage 5 2034 Not to scale



Risk: High Moderate Low Action Ongoing action Monitoring, evaluation, reporting Decision pathway Decision Threshold Trigger

Sandon River/Sandon Village

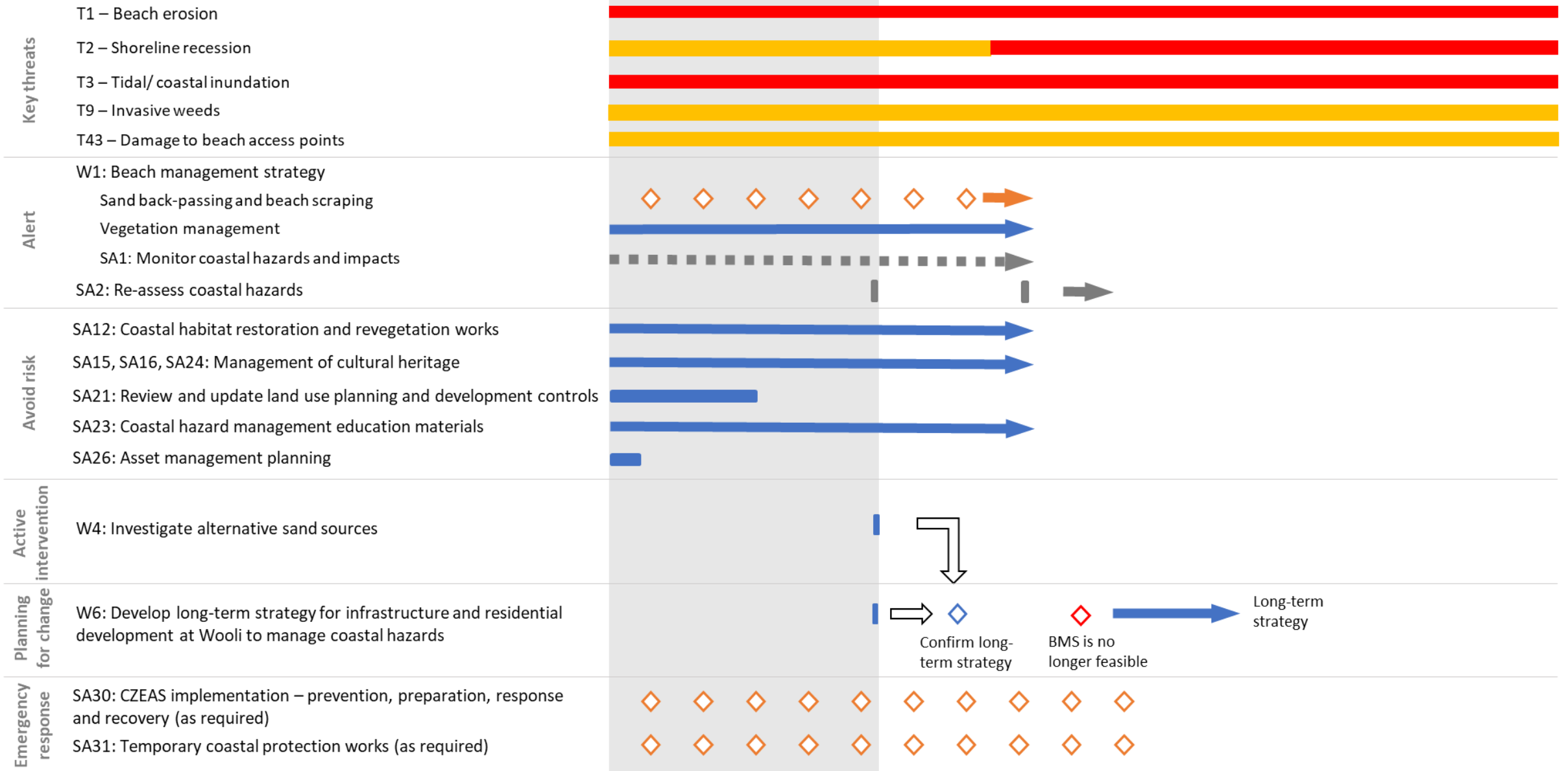
2025 CMP Stage 5 2034 Not to scale



Risk: ■ High ■ Moderate ■ Low
 ■ Action ➡ Ongoing action ■ Monitoring, evaluation, reporting ➡ Decision pathway ◇ Decision ◇ Threshold ◇

Wooli Beach

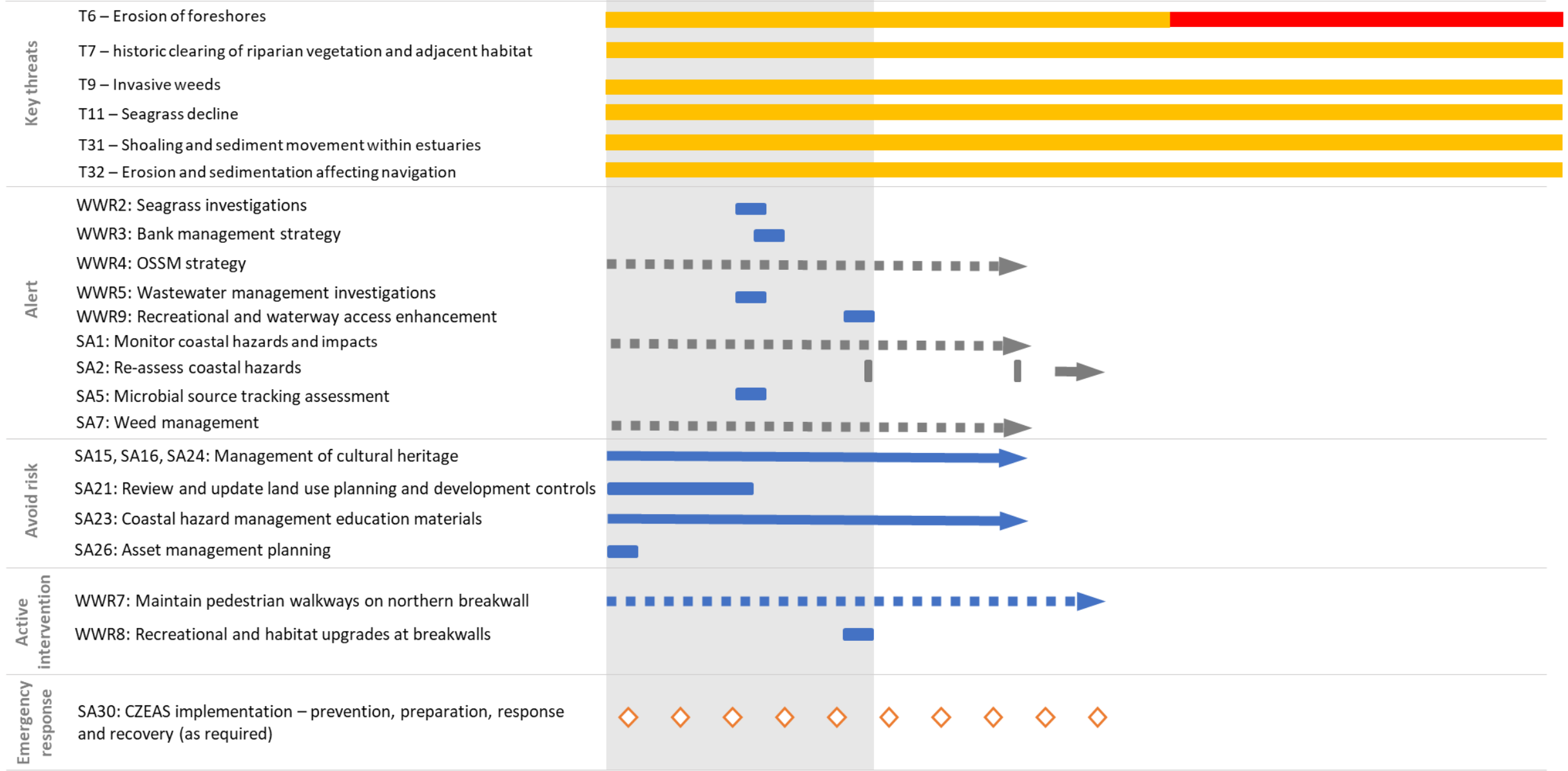
2025 CMP Stage 5 2034 Not to scale



Risk: High Moderate Low Action Ongoing action Monitoring, evaluation, reporting Decision pathway Decision Threshold Trigger

Wooli Wooli River

2025 CMP Stage 5 2034 Not to scale



Risk: ■ High ■ Moderate ■ Low
 ■ Action
 ➡ Ongoing action
 ■ Monitoring, evaluation, reporting
 ⇨ Decision pathway
 ◇ Decision
 ◇ Threshold
 ◇

Discussion – Stage 3 outcomes



Officer Recommendation

The Coast & Estuary Management Committee recommends that Council:

- 1. Notes the Open Coast Coastal Management Program Stage 3 Report,*
- 2. Makes the Open Coast Coastal Management Program Stage 3 Report publicly available on Council's website and the Clarence Conversations project pages,*
- 3. Publicly exhibits the Open Coast Coastal Management Program Stage 3 Report for three weeks,*
- 4. Proceed with the Open Coast Coastal Management Program Stage 4*



CVC&EM meeting: NSW NPWS Clarence Area Report.

1. CV CMP: Stage 3
 - a. Reviewing & working on developing NPWS components of the CMP with Hydrosphere & NPWS Carbon and Restoration Programs Unit, for the current draft of Stage 3 CMP- coasts and:
 - i. CHERP – Woody Head & Sandon.
 - ii. CZEASP
 - b. NPWS Directors briefing on 21 March 2024 on proposed NPWS actions for Stage 3 & where to next.
 - i. Will require NPWS Executive Directors Approval.
2. Everlasting Swamp NP/SCA:
 - a. Restoration plan
 - b. Blue carbon project:
 - i. Review & refocus current projects situations.
3. Other works:
 - a. Sand Nourishment @ Woody Head.
 - i. Engaged Hydrosphere to undertake the planning (REF & ACH). Due by 5 April 2024. Aim to do works in June 2024.

Location of works



Sand Source:



- b. Woody Head utilities realignment REF and civil design works (has not be submitted for approval) including water main.

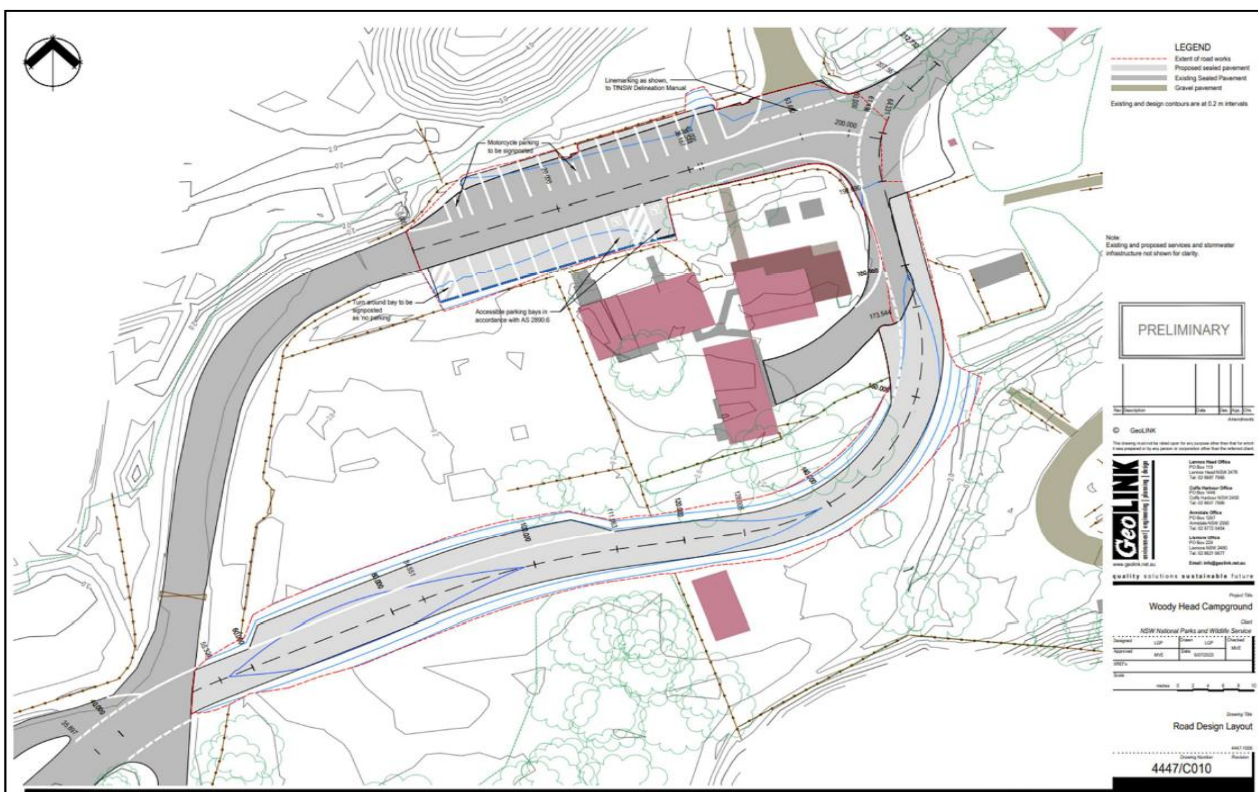


Figure 4:Woody Head Campground Entrance: Road Design Layout

NPWS Staff update: Kath Corbell (is Working on another role/project) – Carly Roder will now be the involved as project lead from Carbon & Restorations Team of NPWS. Mark Fletcher will be NPWS Clarence Area lead.